

AACt  
now!

The campaign for Community Preparatory School's  
**A**rts and **A**thletic **C**enter

The AACt now! Capital Campaign will raise \$12.75 million for Community Preparatory School's expansion and scholarship endowment – while also funding our Head of School search and providing ongoing support for the Annual Fund.







Throughout Community Preparatory School's history there has been one constant – the leadership and vision of co-founder and Head of School, Dan Corley.

Nearly 40 years ago, Dan Corley sat in his living room with a group of parents and community leaders to create a middle school. He chose the name "Community" to emphasize parent, volunteer, and neighborhood participation – as well as the diversity of the student body. Parents selected "Preparatory" to stress academic commitment. In the fall of 1984, Community Preparatory School opened with 25 students and three teachers in rented classrooms at the John Hope Settlement House.

Community Prep's growth and progress – a constant upward trajectory – reflect its evolving maturity. Today, the school proudly recognizes 930 graduates and a faculty of 15 dedicated educators. Its cherished 'Beloved Community' has been thoughtfully nurtured and continues to provide students with academic rigor and exceptional opportunities. It is no coincidence that 97% of Community Prep's graduates have been accepted to competitive college preparatory high school programs.

While it seems unimaginable, a historic moment of transition is on the horizon:

**Dan has announced he will retire at the completion of the 2023-2024 school year.**

Dan Corley's entrepreneurial spirit and determination are as legendary as his energy. And Dan is committed to one last major campaign to complete his vision: to transition the school's physical plant to a full-service campus commensurate with its academic reputation to house extracurricular activities, community participants, and – most importantly – to ensure that every Community Prep student has a welcoming haven for their development.



Community Prep stands as a model of excellence for inner-city education in every aspect.

The strides made to ensure Community Prep's financial sustainability are equally impressive. To its credit and the generosity of many, Community Prep has conducted three successful major fundraising campaigns since its founding. The endowment of Community Prep now stands at \$40 million. This is no Wall Street miracle: rather it is the result of discipline, foresight, and financial acuity.

The school's strategic initiatives, carefully conducted by its leadership, have positioned it for success well into the future. You need to look no further for encouragement than at the school's recent growth and progress:

- **Helped create SouthSide Elementary Charter School.** This partnership allows Community Prep to offer an expanded educational stepping stone to SouthSide's matriculating students.
  - This 9-year relationship has increased the number of students in the building by 75%.
- Sustained Association of Independent Schools in New England (AISNE) membership and accreditation.
- Remodeled second and third floors of original building including lighting, programmable thermostats, energy-efficient windows, and air conditioning and **dramatically improved core teaching and learning spaces.**
- Built field for recreation and soccer.
- Resolved long-term maintenance issues to address **energy efficiencies and environmental sustainability**: replaced roof and inefficient boilers, installed sprinkler system and solar panels.
- Constructed 4,600 square foot first-floor addition providing formal entrance and reception area, administrative offices, student workspaces, a large conference room and elevator.
- Strategically acquired surrounding property to establish expanded contained campus footprint
  - 20,000 sq. ft. of southeast end of Somerset Street
    - Razed previous administration building and built new parking lot
  - 12,600 sq. ft. on Tanner Street
    - Included one structure; property now houses admissions and business offices; conference and staff break rooms and storage space.



# BUILDING FOR THE FUTURE

CONTINUED

---



In tandem with the school's Board of Trustees, Dan Corley has always envisioned Community Prep as bigger than one or even a handful of individuals. This is a school grounded in community. A community of students, educators, parents, and loyal friends and supporters.

The ambitions and goals of this, Dan's final campaign, will elevate Community Prep's physical presence to equal that of its academic reputation. The initiative will enable Community Prep to play a greater and more significant role in the lives of Rhode Island youngsters for years to come.

Dan believes, "Every child deserves a chance at excellence" – ensuring the future of Community Prep now is the most effective means for aspiring children to realize that chance.


Now is the time to secure  
Community Prep, forever.

---

AA<sup>Ⓢ</sup>t now!

Converting a vision to reality requires planning, sound strategy and often bold steps. When the once in a lifetime opportunity arose to acquire every property on its side of the street, Dan and the Board of Trustees did not hesitate to act and purchased #22 and #32 Tanner Street resulting in ownership of all the footage of its block. This tactical acquisition guaranteed:

- Access to connect the north and south side of CP's property
- Secure pathways for youngsters walking to and from classrooms throughout the campus
- Ability to fence the entire property for the safety and security of students and faculty
- Additional footage and the requisite land to construct an Arts and Athletic Center

A photograph showing Ed Cooley, a man in a white jacket and grey pants, standing on a green artificial turf field and addressing a large group of students. The students are wearing various winter coats and face masks, and are lined up in rows. In the background, there are several multi-story residential buildings under a cloudy sky.

Community Prep welcomed Ed Cooley —Providence native, head coach of the Providence College men's basketball team, and 2022 Big East Basketball Coach of the Year—as honorary chair of the AACt Now! Capital Campaign.



## **BUILD** the Arts and Athletic Center

Completing Community Prep's campus, a process decades in the making, will culminate with the construction of an 11,500 square foot arts and athletic center (AAC). The new facility will have the capacity to host an audience of approximately 700 – the school's entire community at one time, a first for Community Prep.

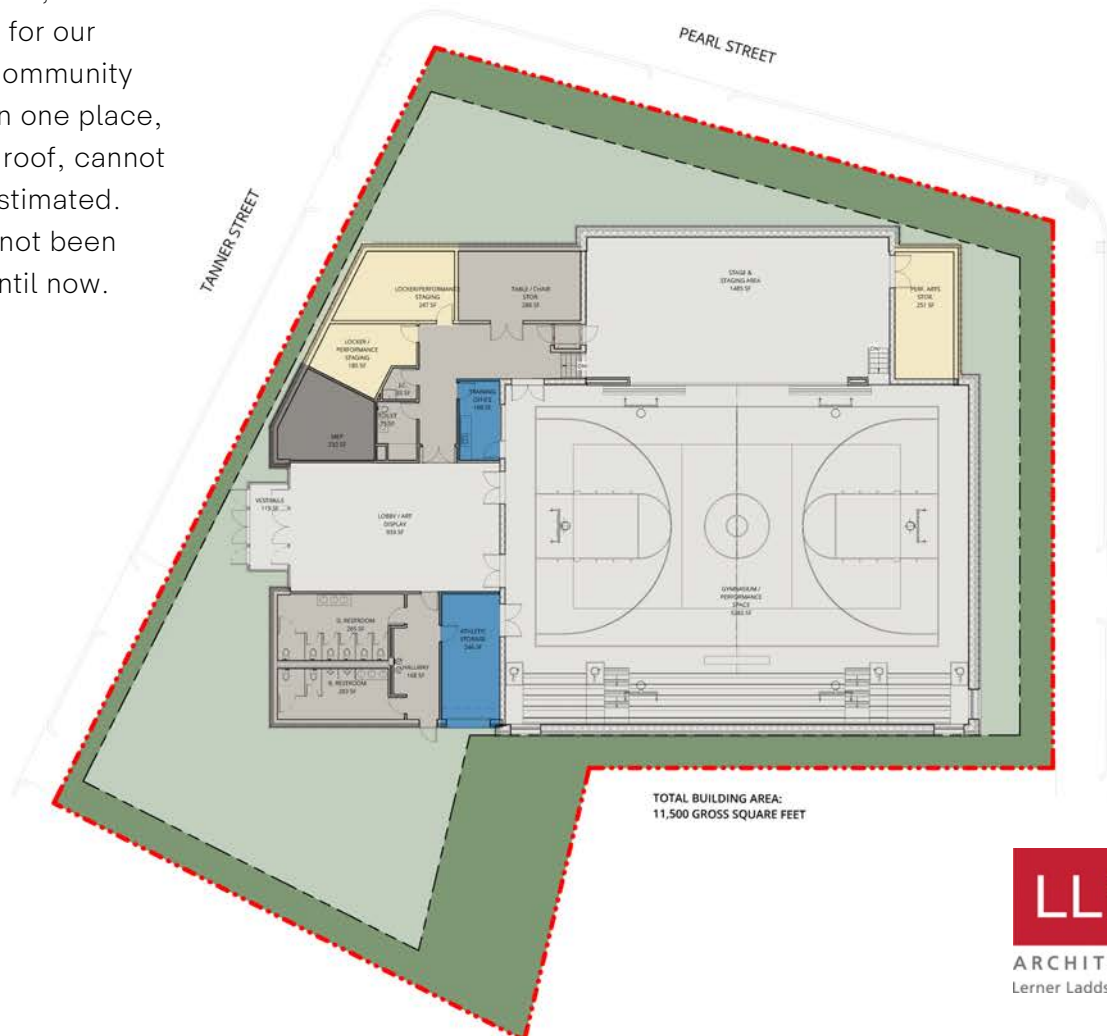
The AAC will not only be a gym and art gallery but will also provide our school community with an opportunity to gather in one space for graduations, school shows, and athletic events.

The ability for our Beloved Community to gather in one place, under one roof, cannot be underestimated. And it has not been possible until now.

As a multi-purpose central meeting space for our entire and extended school community the new Arts & Athletic Center will fulfill and significantly expand extracurricular activity.

This versatile building, the focal point of the campus, features:

- Indoor basketball and volleyball courts
- Art gallery and display walls
- Performance and backstage production area
- Gym can be used for seating for up to 240 people to break bread together around circular tables
- Extensive storage space





## EXPAND

### to Kindergarten

It has long been the dream of Community Preparatory School supporters to offer our rigorous self-actualizing educational program to children at the start of their academic lives.

Over the next decade, we hope to grow Community Prep to serve children in kindergarten through the eighth grade. This will happen slowly and strategically, as we build the endowment necessary to support this expansion - including funding scholarships and adding new classrooms as needed.

## SEARCH for the New Head of School

Finding the right person to follow in Dan Corley's footsteps will not be an easy task. It will require a national search to find a head of school with the creativity and ingenuity to keep Community Preparatory School moving forward through the 21st century. The Board of Trustees is committed to providing the resources for Community Prep's first-ever leadership transition - not only to secure the school's future, but also to further Dan's incredible legacy.

### FUNDING COMPONENTS

|                                |                     |
|--------------------------------|---------------------|
| Arts and Athletic Center (AAC) | \$8,000,000         |
| AAC Operating Expenses         | 500,000             |
| Scholarship Endowment          | 500,000             |
| Head of School Search          | 150,000             |
| Annual Fund                    | 3,600,000           |
| <b>Total</b>                   | <b>\$12,750,000</b> |

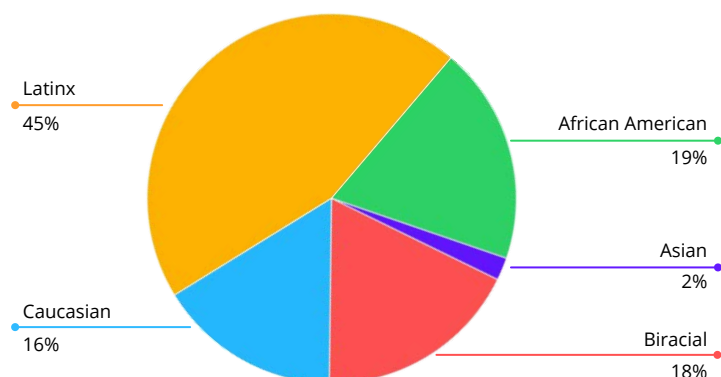
## OVERVIEW

- Independent middle school, grades 4-8
- Founded in 1984
- Located in south Providence, RI
- Teachers of color make up 70% of faculty

## MISSION

At Community Preparatory School, we empower our diverse student body to reach full academic and leadership potential while building a Beloved Community.

## DEMOGRAPHICS



## FINANCIAL AID

Every student accepted is welcome regardless of the family's ability to pay the full \$17,200 tuition.

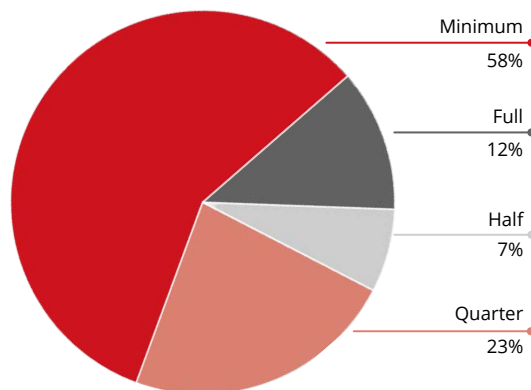
All families are expected to make a reasonable contribution to their child's tuition.

## FUNDING

**84%** of the school's operating budget is funded through donations and other sources; tuition and fees cover only 16%.

Traditional independent schools generate 80 to 90% of their budgets from tuition.

## TUITION



## PLACEMENT

**97%** of Community Prep's 930 graduates have been accepted into college-preparatory high school programs, including highly competitive independent schools across New England.

**83%** of our college-age alumni are attending or have graduated from college, which is **double** the average of most urban public schools.

Over **\$30M** in scholarship assistance has been awarded to our graduates.

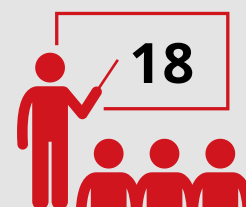
# 123

STUDENTS



**45%** female  
**55%** male

TYPICAL CLASS SIZE



# 65%

of students live in



PROVIDENCE

**61%** are children of immigrants or immigrants themselves, representing **30** countries



**88%** of students receive  
SUBSTANTIAL  
FINANCIAL AID





I could not have asked for a better middle school experience and remember thinking in sixth-grade, 'This is too good to be true.'

I was a shy kid, as shy as they come. Through encouragement and the help of a loving community, I was able to break out of my shell.

And my teachers... I especially loved that they cared about me and were very involved. They were always there when I needed help, whether it concerned school or something else... every teacher I had was invested in my learning.

The school community developed me into a kind, hard-working, ambitious, confident person. I have Community Prep to thank as the root of my success and am forever grateful for everything it has done for me. Community Prep provided me with countless opportunities, amazing people, and a place I could call home.

William Cabral, Class of 2020

- Attending Moses Brown School on a full scholarship -



## High school matriculation throughout the history of the school's 930 graduates:

|                              |                                |                             |
|------------------------------|--------------------------------|-----------------------------|
| 328 Classical H.S.           | 9 Bishop Hendricken H.S.       | 3 St. Patrick Academy       |
| 63 Providence Country Day    | 8 North Providence H.S.        | 3 Textron/Chamber School    |
| 48 The Wheeler School        | 6 Deerfield Academy**          | 2 Cranston West H.S.        |
| 39 Lincoln School            | 5 Blackstone Academy           | 2 Cushing Academy**         |
| 38 La Salle Academy          | 5 St. George's School**        | 2 Ethel Walker School**     |
| 35 Moses Brown School        | 4 Barrington Christian Academy | 2 Feinstein H.S.            |
| 34 Cranston East H.S.        | 4 Miss Porter's School**       | 2 Kent School**             |
| 32 Rocky Hill School         | 4 Mt. Pleasant H.S.            | 2 Masters Regional Academy  |
| 25 The Met School            | 4 Portsmouth Abbey School**    | 2 Paul Cuffee High School   |
| 25 St. Raphael Academy       | 4 Westover School**            | 2 Shea H.S.                 |
| 19 RI School for the Deaf    | 3 Central H.S.                 | 2 St. Mark's School**       |
| 17 Hope H.S.                 | 3 Concord Academy**            | 2 Tabor Academy**           |
| 17 St. Andrew's School**     | 3 The Greene School            | 2 Highlander Charter School |
| 13 St. Mary Academy-Bay View | 3 Miss Hall's School**         | 2 Johnston H.S.             |
| 13 School One                | 3 Phillips Academy Andover**   |                             |
| 10 East Providence H.S.      | 3 Pomfret School**             |                             |

1 Berkshire Academy\*\*, Bishop Keough School, Blackstone Valley Prep Academy, Bridgton Academy\*\*, Cambridge School of Weston\*\*, Choate Rosemary Hall\*\*, Cumberland H.S., Dublin School\*\*, E. Greenwich H.S., Edgewood High School, First Baptist Christian School, Fountain Valley School of Colorado, Fryeburg Academy\*\*, Groton School, Hillside School\*\*, Hopkins School, Idyllwild Arts Academy\*\*, J.M. Walsh School of the Arts, Lawrence Academy\*\*, Lincoln Senior H.S., Mandarin High School, Marvelwood School\*\*, Millbrook School\*\*, Milton Academy\*\*, Model Sec. School for the Deaf, Mount St. Charles Academy, North Kingstown H.S., Ponaganset H.S. Pathways, Providence Academy of Int'l Studies, Prov. Career and Tech. Academy, R.I. Nurses Institute Middle College Charter, Saunderson H.S., Schackelton School\*\*, Smithfield H.S., South Kent School\*\*, Tolman H.S., Trinity Academy for the Performing Arts, Walnut Hill School\*\*, Warwick H.S., West Warwick H.S., Westminster School\*\*, Westport H.S., William M. Davies Career & Technical H.S., Woonsocket H.S., Worcester Academy\*\*

\*\* Boarding school

# HIGH SCHOOL MATRICULATION

## CLASS OF 2021

Community Preparatory School's Class of 2021 received a total of **\$1,870,000** in scholarship assistance:

- \* Student's chosen high school
- ✦ Scholarship received
- Boarding school

**Melannie Baez-Carmona**

\* Classical High School  
La Salle Academy ✦  
St. Raphael Academy ✦

**Alan Chen**

\* Cranston High School East  
Providence Country Day

**Patrick Collins**

\* Classical High School

**Sammy Duarte**

\* The Greene School  
Providence Country Day  
Rocky Hill Country Day ✦  
William M. Davies, Jr. Career  
and Technical High School

**Jabari Edmonds**

\* Wheeler School ✦  
Classical High School  
Moses Brown School ✦  
Providence Country Day  
Rocky Hill Country Day ✦  
St. Andrew's School •  
St. Raphael Academy ✦

**Jaylen Edmonds**

\* Wheeler School ✦  
Moses Brown School ✦  
Providence Country Day  
Rocky Hill Country Day ✦  
St. Andrew's School •  
St. Raphael Academy ✦

**Promise Egunjobi**

\* Wheeler School ✦  
Classical High School

**Jake Fitzpatrick**

\* Classical High School

**Cesar Godinez**

\* Providence Country Day ✦

**Zora Greene**

\* Classical High School

**George Groves**

\* Classical High School

**Valerie Lotero**

\* Johnston High School

**Benjamin Merritt**

\* Classical High School  
Moses Brown School  
Providence Country Day  
Wheeler School

**Rory Merritt**

\* Moses Brown School  
Classical High School  
Providence Country Day  
Wheeler School

**Bianca Monteiro-Lopes**

\* Lincoln School ✦  
Classical High School  
Providence Country Day  
Wheeler School

**Charli Moody**

\* La Salle Academy  
Classical High School

**Vyannis Moronta**

\* Providence Country Day ✦  
Classical High School  
La Salle Academy ✦

**Hazyl Mowatt**

\* Lincoln School ✦  
Classical High School  
La Salle Academy ✦  
Providence Country Day

**Dariana Munoz**

\* St. Patrick Academy ✦  
La Salle Academy ✦

**Mustapha Ndoeye**

\* Cranston High School East

**Niyalise Neves**

\* Wheeler School ✦  
Classical High School  
La Salle Academy ✦

**Olilanya Ogueri**

\* Phillips Academy Andover ✦ •  
Classical High School  
Brewster Academy ✦ •  
Hoosac School ✦ •  
Moses Brown School ✦  
Northfield Mount Hermon  
School ✦ •  
Phillips Exeter ✦ •  
Portsmouth Abbey ✦ •  
Wheeler School

**Emilio Pichardo**

\* Classical High School

**Masiah Prak-Preaster**

\* Rocky Hill Country Day ✦  
Classical High School  
Providence Country Day

**Asib Rahman**

\* Classical High School  
Cranbrook Schools ✦  
Providence Country Day ✦

**Jonathan Recinos**

\* Classical High School  
La Salle Academy ✦

**Isaac Reitsma Sandlin**

Classical High School ✦

**Gabriella Rodriguez**

\* Classical High School  
La Salle Academy  
Providence Country Day

**Alessandra Ruggiero**

\* Lincoln School ✦  
Providence Country Day  
Wheeler School

**Aryanna Santana**

\* Classical High School

**Rayan Sarlak**

\* Classical High School  
Providence Country Day  
Rocky Hill Country Day ✦

**Jeniah Simao**

\* La Salle Academy ✦  
Classical High School

**Earl Smith IV**

\* La Salle Academy ✦  
St. Raphael Academy ✦

**Maxden Soch**

\* Providence Country Day ✦  
Classical High School  
Moses Brown School  
St. Andrew's School •

**Nerissa Theisen**

\* Providence Country Day ✦  
Classical High School  
Moses Brown School

**Nola Traynor**

\* Classical High School  
The Met High School

**Camila Uriona**

\* Wheeler School ✦  
La Salle Academy ✦  
Lincoln School ✦  
Providence Country Day  
St. Patrick Academy ✦  
St. Raphael Academy ✦

**Asher Westberg-Rubin**

\* Classical High School

**Micah Woodward Faudree**

\* Classical High School  
Providence Country Day ✦  
St. Andrew's School •  
Wheeler School

Since 1984, 83% of Community Preparatory School's college-age graduates are attending or have graduated from college - double the average of most urban public schools. In addition, they have received more than \$30 million in scholarship assistance.



|    |  |    |  |     |   |
|----|--|----|--|-----|---|
| 2  | Albertus Magnus College                                      | 2  | Gettysburg College   | 5   | Rochester Institute of Technology         |
| 2  | American International                                       | 1  | Goddard College  | 5   | Roger Williams University                 |
| 5  | American University  | 1  | Gordon College   | 2   | Salve Regina University                   |
| 1  | Anna Maria College   | 1  | Goucher College  | 3   | St. John's University                     |
| 1  | Arcadia College  | 1  | Grinnell College   | 1   | St. Leo's College                         |
| 1  | Argosy University  | 4  | Hampton University   | 2   | St. Michael's College                     |
| 1  | Arizona State University                                     | 1  | Hartwick College   | 3   | Sarah Lawrence College                    |
| 1  | Art Institute of New York                                    | 1  | Harvard University   | 1   | Scripps College                           |
| 1  | Ashworth College   | 1  | Harvard Graduate School of Education                       | 1   | Seton Hall University                     |
| 1  | Assumption College   | 1  | Haverford College  | 1   | Simmons College                           |
| 4  | Babson College   | 1  | Hobart & William Smith Colleges                            | 1   | Skidmore College                          |
| 4  | Bard College   | 9  | Howard University  | 1   | Southern Vermont College                  |
| 2  | Bates College  | 1  | Hunter College   | 1   | Spelman College                           |
| 1  | Becker College   | 1  | Indiana University   | 3   | Springfield College                       |
| 1  | Beloit College   | 1  | Ithaca College   | 1   | Stanford University                       |
| 2  | Berklee College of Music                                     | 1  | Johns Hopkins University                                   | 1   | Stonehill College                         |
| 1  | Bob Jones University   | 13 | Johnson & Wales University                                 | 1   | State University of New York - Binghamton |
| 2  | Boston College   | 1  | Johnson Smith College                                      | 1   | State University of New York - Purchase   |
| 1  | Boston College - <i>Carroll School of Management</i>         | 1  | Keene State College  | 8   | Syracuse University                       |
| 13 | Boston University  | 2  | Kenyon College   | 13  | Temple University                         |
| 2  | Bowdoin College  | 2  | Lafayette College  | 2   | The Citadel                               |
| 3  | Brandeis University  | 3  | Lake Forest College  | 4   | Trinity College                           |
| 1  | Bridgewater State University                                 | 1  | Lasell University  | 8   | Tufts University                          |
| 15 | Brown University   | 1  | Lehman College   | 1   | Tulane University                         |
| 6  | Bryant University  | 1  | Lenoir-Rhyne University                                    | 2   | Union College                             |
| 1  | Carleton College   | 2  | Lesley College   | 1   | United States Marine Corps                |
| 68 | Community College of Rhode Island                            | 1  | Lynn University  | 1   | University of Bridgeport                  |
| 1  | City University of New York                                  | 2  | Maine College of Art                                       | 1   | University of California - Santa Barbara  |
| 1  | Clark University   | 1  | Manhattan College  | 1   | University of Central Florida             |
| 5  | Colgate University   | 1  | Marlboro College   | 2   | University of Chicago                     |
| 1  | College of the Holy Cross                                    | 2  | Massachusetts College of Art and Design                    | 2   | University of Connecticut                 |
| 3  | College of Mount Saint Vincent                               | 1  | Massachusetts Institute of Technology                      | 1   | University of Dallas                      |
| 1  | Colorado College   | 1  | McDaniel College   | 1   | University of Delaware                    |
| 1  | Columbia College of Chicago                                  | 1  | McGill University  | 1   | University of Hartford                    |
| 3  | Columbia University  | 1  | Medaille College   | 1   | University of Maine - Orono               |
| 1  | Columbia University - <i>Mailman School of Public Health</i> | 1  | Middle Tennessee University                                | 1   | University of Massachusetts - Amherst     |
| 1  | Connecticut College  | 1  | Middlebury College   | 2   | Dartmouth                                 |
| 1  | Cornell University   | 1  | Moravian College   | 1   | Lowell                                    |
| 2  | Curry College  | 5  | Morehouse College  | 2   | University of Michigan                    |
| 2  | Davidson College   | 5  | Morgan State University                                    | 1   | University of Nebraska                    |
| 1  | Dean College   | 4  | Mount Holyoke College                                      | 1   | University of New Hampshire               |
| 1  | Dickinson College  | 6  | National Technical Institute for the Deaf                  | 2   | University of New Haven                   |
| 1  | Drew University  | 5  | New England Institute of Technology                        | 1   | University of North Carolina - Charlotte  |
| 5  | Drexel University  | 1  | New Hampshire Technical Institute                          | 1   | Univ. of Oregon - School of Architecture  |
| 2  | Duke University  | 1  | New School University                                      | 108 | University of Rhode Island                |
| 2  | Eckerd University  | 2  | New York University  | 2   | URI - College of Pharmacy                 |
| 2  | Elms College   | 1  | Newbury College  | 2   | University of San Carlos - Guatemala      |
| 1  | Elon University  | 3  | Nichols College  | 1   | University of San Francisco               |
| 3  | Emerson College  | 2  | North Carolina Agricultural and Technical State University | 1   | University of South Florida               |
| 2  | Emmanuel College   | 7  | Northeastern University                                    | 2   | University of Texas                       |
| 3  | Emory University   | 1  | Occidental College   | 2   | University of Vermont                     |
| 1  | Escoffier Culinary School                                    | 1  | Oral Roberts University                                    | 1   | University of Virginia                    |
| 1  | Evergreen College  | 4  | Pace University  | 2   | University of Wisconsin                   |
| 1  | Fairleigh Dickinson University                               | 2  | Pine Manor College   | 1   | Utica College                             |
| 1  | Florida International University                             | 1  | Pomona College   | 1   | Valencia College                          |
| 1  | Florida State College - <i>Jacksonville</i>                  | 2  | Pratt Institute  | 1   | Wake Forest College                       |
| 1  | Florida State University                                     | 7  | Providence College   | 2   | Wellesley College                         |
| 1  | Fordham University   | 1  | Quinnipiac University                                      | 1   | Wentworth Institute of Technology         |
| 1  | Framingham State College                                     | 1  | Randolph-Macon College                                     | 1   | Wesleyan University                       |
| 1  | Franklin & Marshall College                                  | 1  | Reed College   | 7   | Wheaton College                           |
| 8  | Gallaudet University   | 1  | Rensselaer Polytechnic Institute                           | 2   | Wheelock College                          |
| 2  | George Washington University                                 | 60 | Rhode Island College                                       | 1   | Worcester Polytechnic Institute           |
| 1  | Georgia Perimeter University                                 | 1  | Rhodes College   | 1   | Worcester State College                   |
| 1  | Georgia State University                                     | 6  | Rhode Island School of Design                              | 1   | Xavier College                            |
|    |  | 2  | Roanoke College  | 1   | Yale University                           |